



# **WELCOME** to the **Department of Counseling Information Session!**

If you still have questions after reviewing the website and attending this session, contact [applymsc@sfsu.edu](mailto:applymsc@sfsu.edu)

- ▶ Explore website  
Academics and  
Admissions  
information

# Overview of this Information Session

- ▶ Introduction: Dr. Rebecca Toporek, Department Chair, Department of Counseling, SF State University (she/they pronouns)
- ▶ About our program, our mission and our aspirations
- ▶ Programs, courses, and internships
- ▶ Admissions process



# Acknowledgement

- ▶ San Francisco State University is located on the occupied Ohlone Ramaytush and the Coastal Miwok territories and we humbly acknowledge that our opportunity to live and work in what is now called the San Francisco Bay Area is only possible by the sacrifice of many indigenous people historically as well as their contributions today.
- ▶ We also acknowledge that we benefit from the many Black and Brown communities who have worked, often in unjust circumstances, to make the public university system possible in California as well as the U.S. as a whole.



"We are Still Here" Native American Community Mural at San Francisco State University



# UP NEXT: ABOUT US



## OUR MISSION

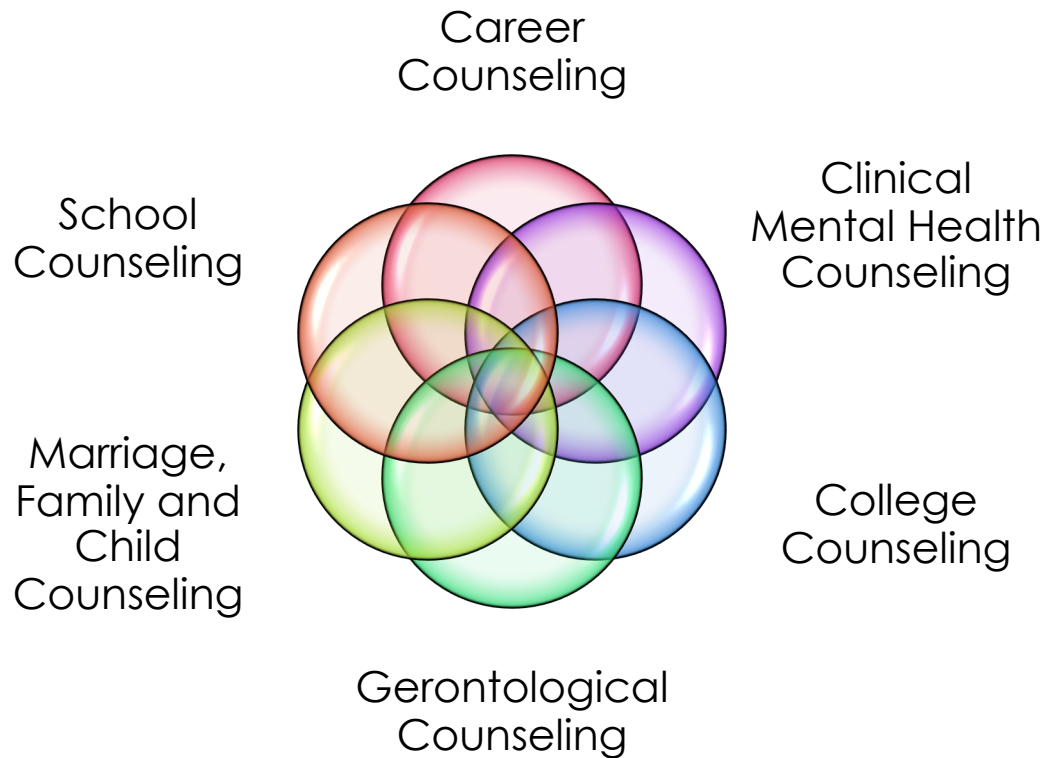
- To train the next generation of counselor leaders
- who recognize that the liberation of all communities is only possible when an
- intersectional, participatory, community-driven approach to counseling is practiced.
- Our training program is grounded in the belief that counseling, as a field of practice, affords professionals the
- knowledge and skills needed to carry out social justice work
- via strengths-based healing and wellness, advocacy, critical consciousness development, and action-oriented scholarship and research.

**Department of Counseling, San Francisco State University**



# ABOUT THE DEPARTMENT

## OUR SPECIALIZATIONS



\*May choose a specialization and emphasis

**Department of Counseling, San Francisco State University**



# 3 DEGREES 6 SPECIALIZATIONS

- ▶ **Master of Science in Counseling**
  - ▶ Career
  - ▶ College
  - ▶ Gerontology
  - ▶ School Counseling
- ▶ **Master of Science in Clinical Mental Health Counseling**
- ▶ **Master of Science in Counseling Concentration in Marriage, Family, and Child Counseling**

<https://counseling.sfsu.edu/academics>

**Department of Counseling, San Francisco State University**



# Specialization and Emphasis

## **Specializations:**

- Career Counseling
- Clinical Mental Health Counseling
- College Counseling
- Gerontological Counseling
- Marriage Family Child Counseling
- School Counseling

## **Emphasis (optional):**

- Career Counseling
- Clinical Mental Health Counseling
- College Counseling
- Gerontological Counseling
- School Counseling
  
- For emphases, take specialization + emphasis courses; and complete internship requirements for specialization and emphasis (in some cases requires 3 years of internship)
  
- Once in program, may request to add emphasis if not added during application

# Which Specialization or Program is Right for You?

- ▶ Read about each specialization, the required classes, the specialization faculty bios
- ▶ What type of setting do you want to work in?
  - ▶ Look at job announcements and understand their requirements (do they require a license? If so, what types of license?)
- ▶ What populations you want to work with and in what way?
- ▶ If you are debating licensed work (mental health counseling) research differences on BBS website (CA Board of Behavioral Sciences)
- ▶ Compare what you have learned about our programs with what you learn about other programs
- ▶ If you are debating between counseling, psychology, social work, or other fields, talk to each program, read the BBS website, look at course requirements, and read job announcements



# Professional Paths and Careers of Our Graduates

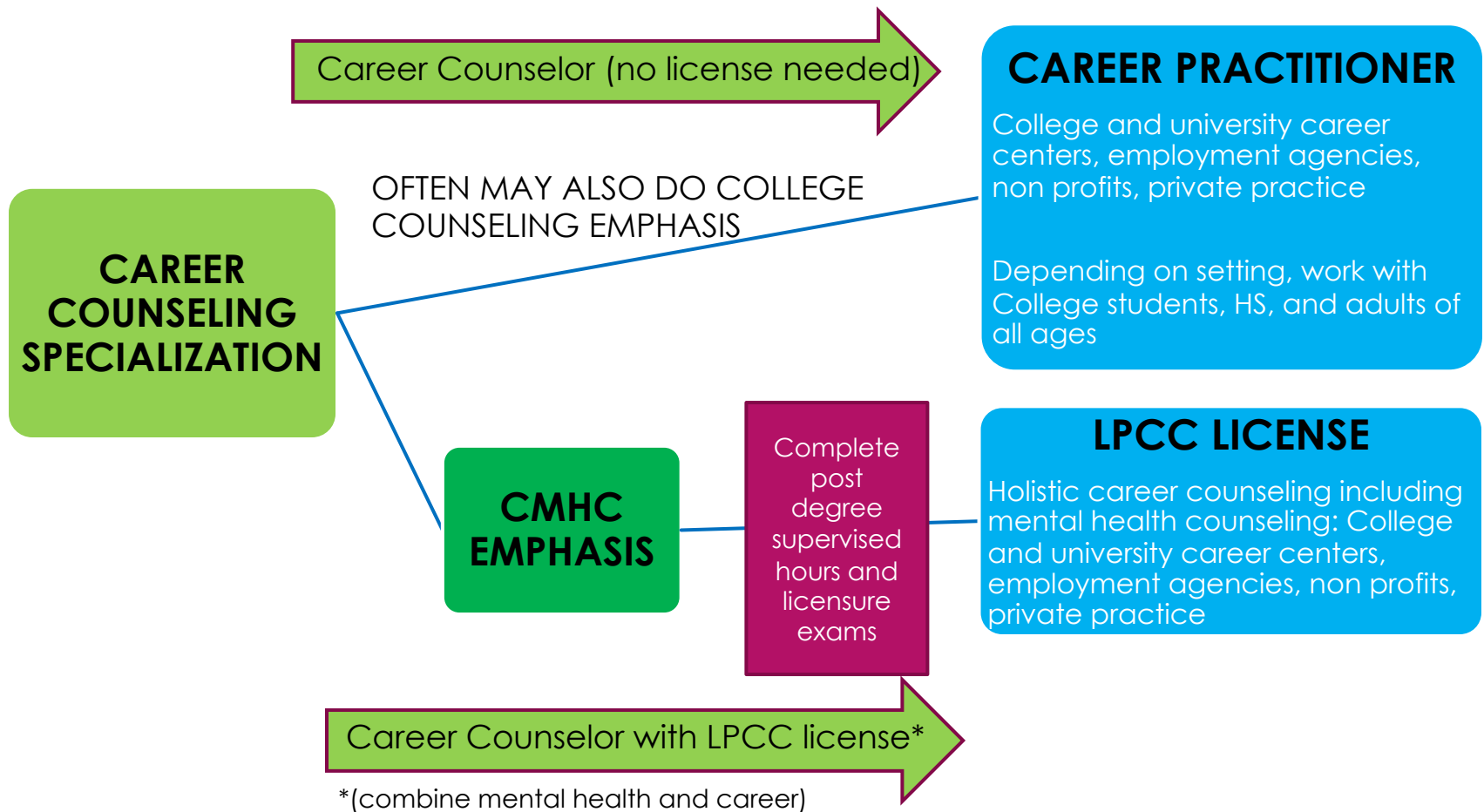


Department of Counseling, San Francisco State University



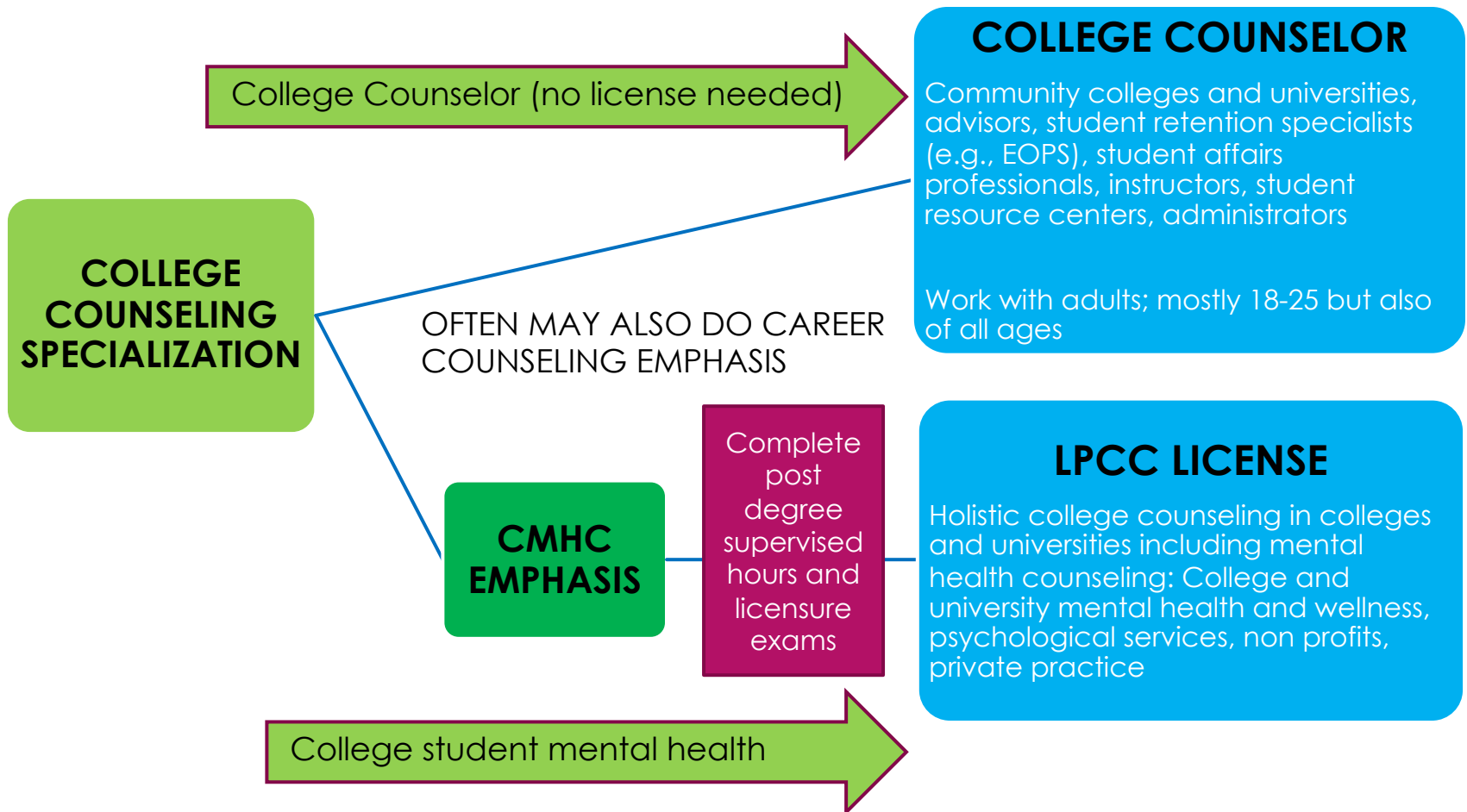
# Career Counseling Specialization

MS in Counseling



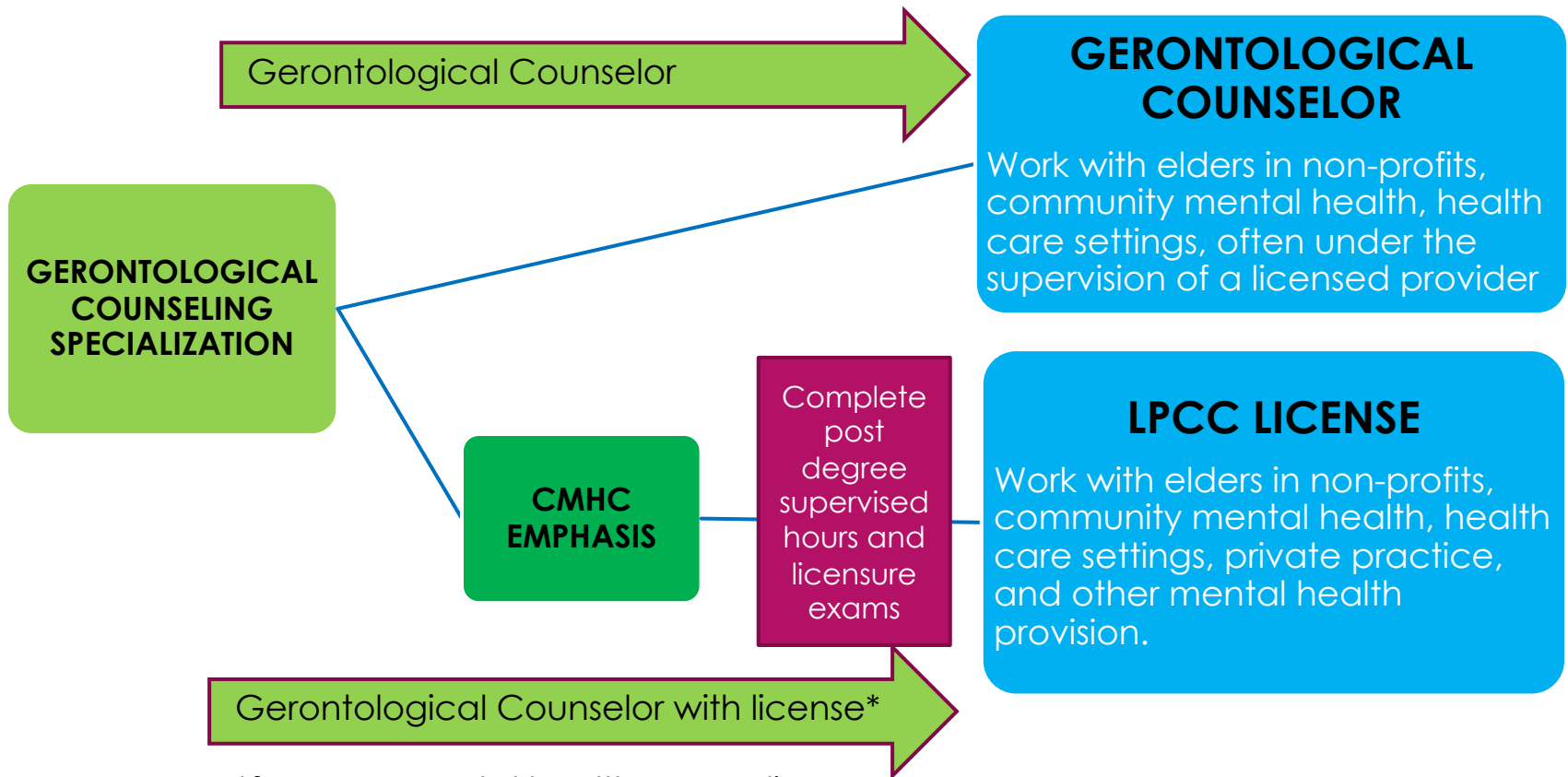
# College Counseling Specialization

*MS in Counseling*



# Gerontological Counseling Specialization

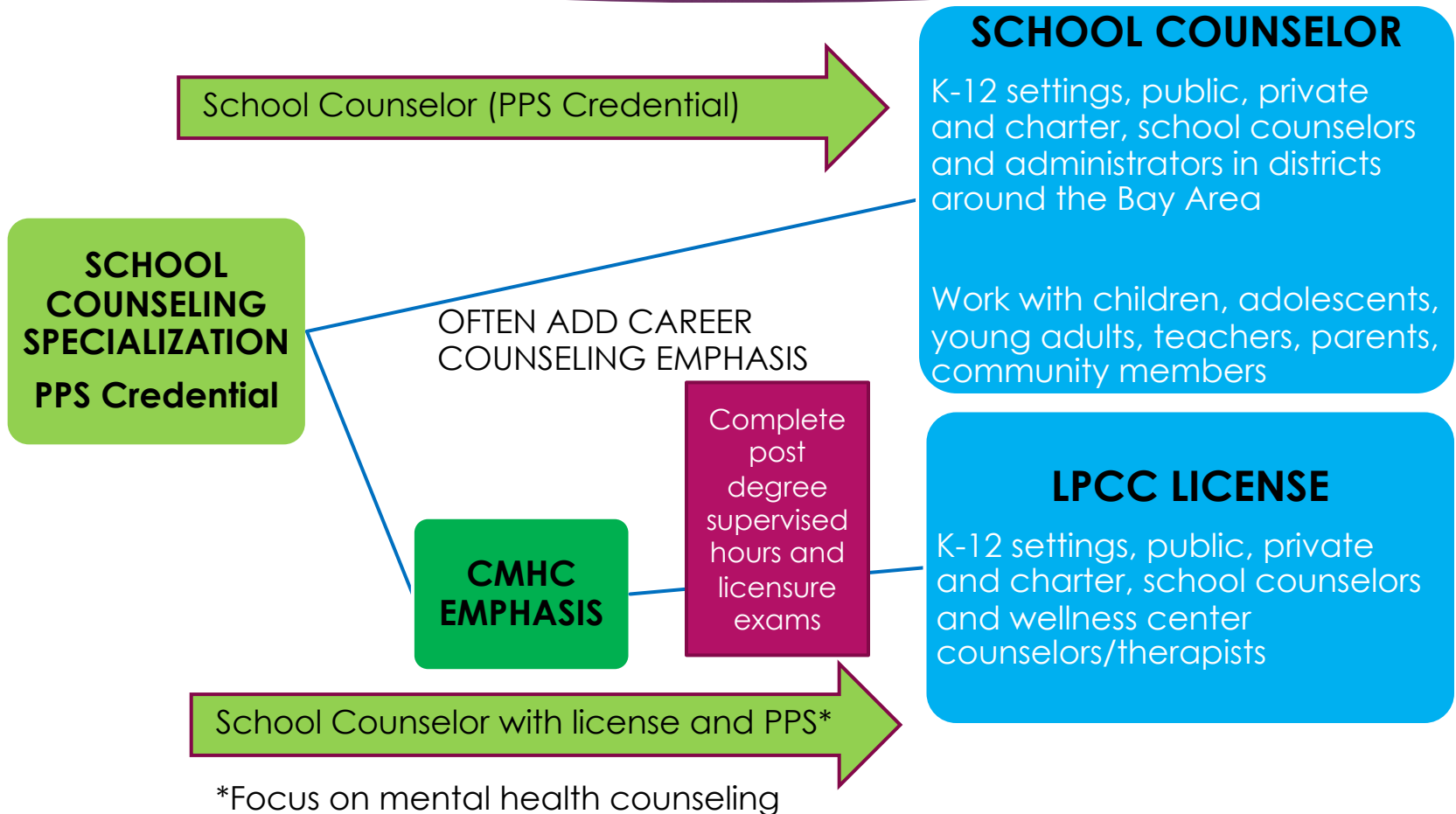
MS in Counseling



\*focus on mental health counseling

# School Counseling Specialization

MS in Counseling



# Clinical Mental Health Counseling Specialization (CMHC)

*MS in Clinical Mental Health Counseling*

**CLINICAL  
MENTAL HEALTH  
COUNSELING  
SPECIALIZATION  
(CMHC)**

OFTEN MAY ALSO DO CAREER,  
COLLEGE, OR  
GERONTOLOGICAL  
COUNSELING EMPHASIS

Complete  
post  
degree  
supervised  
hours and  
licensure  
exams

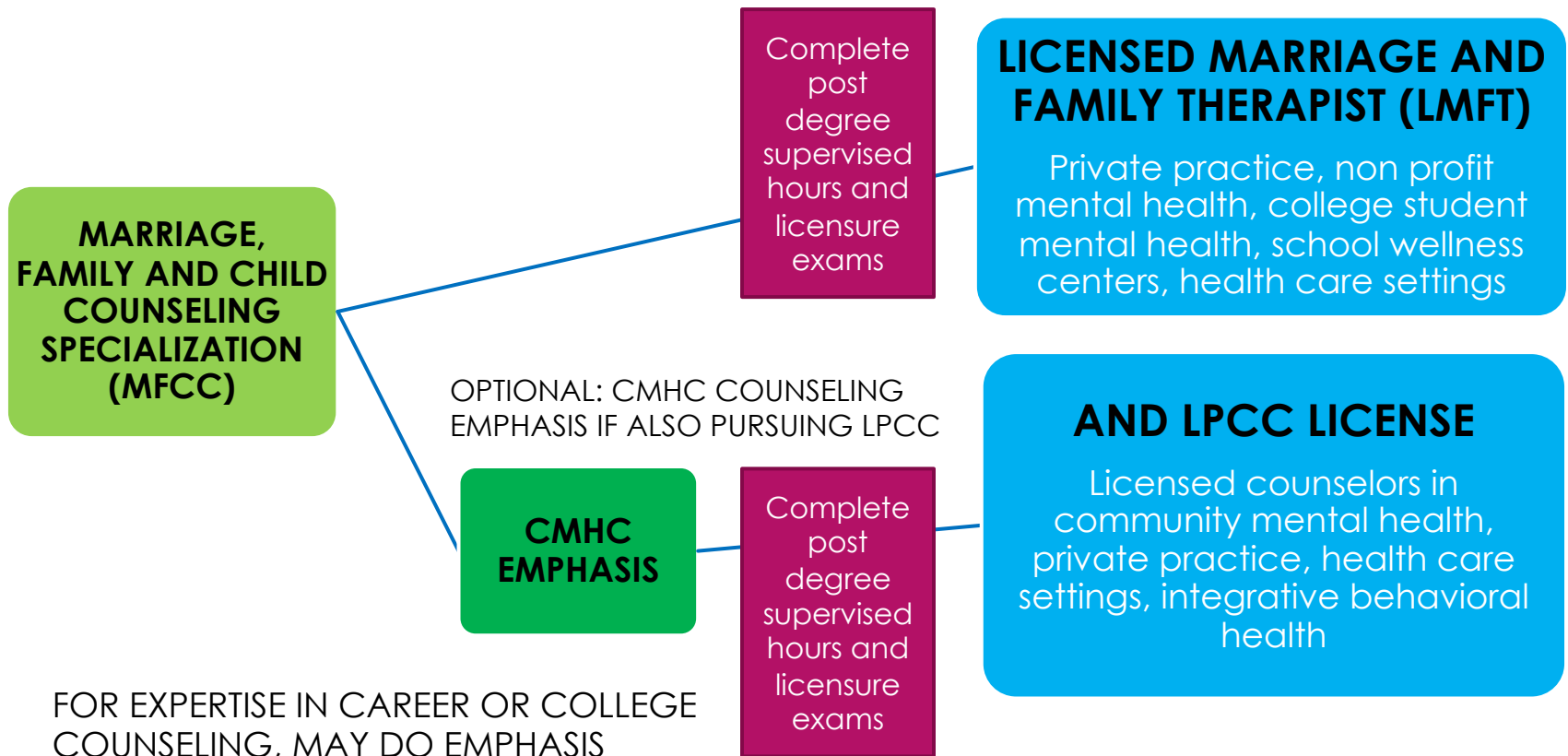
**LICENSED CLINICAL  
MENTAL HEALTH  
COUNSELOR (LPCC)**

Licensed counselors in  
community mental health,  
private practice, health care  
settings, integrative behavioral  
health

Work with a wide

# Marriage, Family and Child Counseling Specialization (MFCC or MFT)

*MS in Counseling with Concentration in Marriage, Family and Child Counseling*



# LICENSES, CREDENTIALS AND CERTIFICATIONS AVAILABLE

## ▶ State of California

- ▶ Licensed Marriage Family Therapist (LMFT)
- ▶ Licensed Professional Clinical Counselor (LPCC)
- ▶ Pupil Personnel Services (PPS) Credential

## ▶ National Certifications

- ▶ National Certified Counselor (NCC)
- ▶ Certified Career Counselor (CCC)
- ▶ Certified Mental Health Counselor (CMHC)
- ▶ Certified Rehabilitation Counselor (CRC)





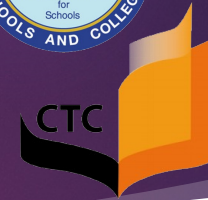
# Licensure and Credential Requirements

- ▶ License in Professional Clinical Counseling (LPCC)
  - Master's degree in Counseling with clinical counseling training. In our program is Specialization or Emphasis in CMHC
  - Total 3000 hours of supervised experience after completing master's program
  - Licensure exams (post degree and after required hours are completed)
- ▶ License Marriage, Family Therapy (LMFT)
  - Master's degree in MFCC or MFT
  - Total 3000 hours of supervised experience (some of which can be completed as part of master's program)
  - Licensure exams (post degree and after required hours are completed)
- ▶ Pupil Personnel Services Credential (PPS)
  - Master's degree in School Counseling
  - State mandated forms and health clearances (see DoC website for details)

**Department of Counseling, San Francisco State University**



# OUR ACCREDITATION



- Western Association of Schools and Colleges (WASC)
- Council for the Accreditation of Counselor and Related Education Programs (CACREP)
- The California Commission on Teacher Credentialing (CTC)



<https://counseling.sfsu.edu/content/program-assessment-and-accreditation>

**Department of Counseling, San Francisco State University**



# OUR FACULTY



- 10 full time faculty and 20+ part time faculty
- Committed to student success and developing effective and competent counselors
- Practicing counselors and therapists, researchers, writers
- Internationally and nationally recognized scholars and professional leaders
- See our website for bios of all of our faculty



<https://counseling.sfsu.edu/people>

**Department of Counseling, San Francisco State University**



# UP NEXT: BEING A STUDENT IN THE PROGRAM

- ▶ Course load
- ▶ Internships
- ▶ Time to graduation
- ▶ Opportunities for community building
- ▶ Resources
- ▶ Professional training program with professionalism expectations



# Courses and Load

## 60 units of coursework required for degree

(minimum with one specialization required)

- Core classes
- Specialization and emphasis classes
- Internship classes

Fall and Spring program  
1-2 courses offered in summer,  
varies by year and funding)

### Classes- Each class meets 3 hours 1x week (Monday – Thursday)

- Will have required classes 9am – 12noon; 1 – 4pm, 4 – 7pm; 7 – 10pm (varies by semester)
- For full-time expect to take courses 2-3 days/week
- Some courses may be offered only day, some only night
- Majority of classes are in person; only a few are offered online

### Part-time or Full-time

- Approx. 50-75% complete courses in 2 years

**Department of Counseling, San Francisco State University**



# Time to Graduation

Specialization and/or emphasis?	Minimum Units Required	Full-time (15 units) or Part-time (9-12 units)	Estimated time to degree*
Specialization only	60 units	Full time	2-2.5 years
Specialization only	60 units	Part-time	3+ years (depends on number of units)
Specialization and emphasis	63-72	Full-time	2-3 years (depends on which specialization and emphasis; some combinations require 3 internships)
Specialization and emphasis	63-72	Part-time	3+ years (depends on which specialization and emphasis; some combinations require 3 internships)

\*Students who are required to take HSS 700 to meet Graduate Writing Standards- Add an additional semester or take 18 units at least one semester or summer session



# 2023 Graduates - Time to Graduation

Time to degree*	% of 2023 graduates (n=42)
2-2.5 years (full time)	24%
3-3.5 years (part time)	62%
4+ years (part time)	14%

64% students chose to complete Specialization + Emphasis (63-72 units)

\*Students graduating in 2023 entered the program just before, or during, COVID restrictions



# Internships



- ▶ Internship provides training at master's level counseling skills; more than 200 approved sites
- ▶ Minimum 2 years of internship in specialization setting (in 2 different sites); some combinations of specialization and emphasis may require 3+ years of internship
  - ▶ First year internship 12-16 hours/week
  - ▶ Second year internship 16-20 hours/week
- ▶ Internships weekday-daytime hours
- ▶ Supervised by professional counselor
- ▶ Must enroll in practicum or internship courses concurrently while doing internship
- ▶ A few sites may offer stipend; most internships are not paid
- ▶ Current jobs not generally approved as internship site



<https://counseling.sfsu.edu/practicum-and-internship>

**Department of Counseling, San Francisco State University**





# Support for students finding internships

- All internships must submit an application and are reviewed by the DoC to ensure they provide appropriate experience and supervision for students
- Sites that meet DoC, BBS, CCTC (for PPS) and CACREP standards are pre-approved by Department (students may only choose pre-approved site)
- Students have access to master list of all sites
- Internship fair for incoming students at orientation; internship fair for continuing students in February
- Support people: internship coordinator, faculty advisor, and specialization coordinator
- Once in internship, student's internship instructor is also a liaison to their internship site and supervisor



# Opportunities for Community Building

Faculty advisors,  
Internship  
Coordinator,  
Department Chair,  
Staff

Specialization  
cohort

Student  
Organizations:  
Counseling Student  
Association (CSA)  
First Gen Counseling  
Student Association

Peer Mentoring  
Project

**Department of Counseling, San Francisco State University**



# Resources for Students

- ▶ Disability Programs and Resource Center (DPRC)
- ▶ Equity and Community Inclusion
- ▶ Graduate Studies
  - ▶ Funding your education (tuition, fees, financial aid, etc.)
  - ▶ Off Campus Housing
  - ▶ International students/applicants
- ▶ Counseling and Psychological Services
- ▶ Food+Shelter+Success
- ▶ Student Health



# Scholarships, Grants and Opportunities

## ▶ Scholarships and Financial Aid

- ▶ Financial Aid Office (see website)
- ▶ Dept of Counseling Scholarships and Training Grants (see website)
- ▶ Training grants
- ▶ Internships generally are not paid, or pay a small amount
- ▶ Instructor mentee program (working with an undergraduate instructor's class) – small stipend (\$500)
- ▶ For SF State staff-there is a fee waiver program
- ▶ Rare to have paid research or graduate assistant positions

# Training Grants for SF State Students

## Integrated Behavioral Health

- \$10,000 stipend in final year
- Complete internship in Integrated Behavioral Health (includes schools)
- Attend 10 Hours of Training

## School-Based Mental Health

- \$10,000 stipend each year
- Intern in High Needs Public School in OUSD or SFUSD
- Commit to 1 year post-grad work in high needs public school

## Disability Justice

- \$10,000 stipend each year
- Complete COUN 704 & 870
- Commit to 2 years post-grad work in non-profit setting serving people with disabilities

Find more details about requirements and how to apply at:  
<https://ibhequity.sfsu.edu/stipend-information>

# Professional Training Program with Professionalism Expectations

- ▶ Commitment to multicultural and social justice values
- ▶ Accountability, participation and attendance
- ▶ Collegial student behavior
- ▶ Maintain communication with advisor and instructors
- ▶ Look ahead to ensure reasonable load and balance of responsibilities
- ▶ Be prepared for class
- ▶ Seek help when needed
- ▶ Final capstone project-Culminating Experience Project



About our  
students and  
program  
outcomes

CHECK OUT THE  
DEPARTMENT OF  
COUNSELING WEBSITE  
FOR:

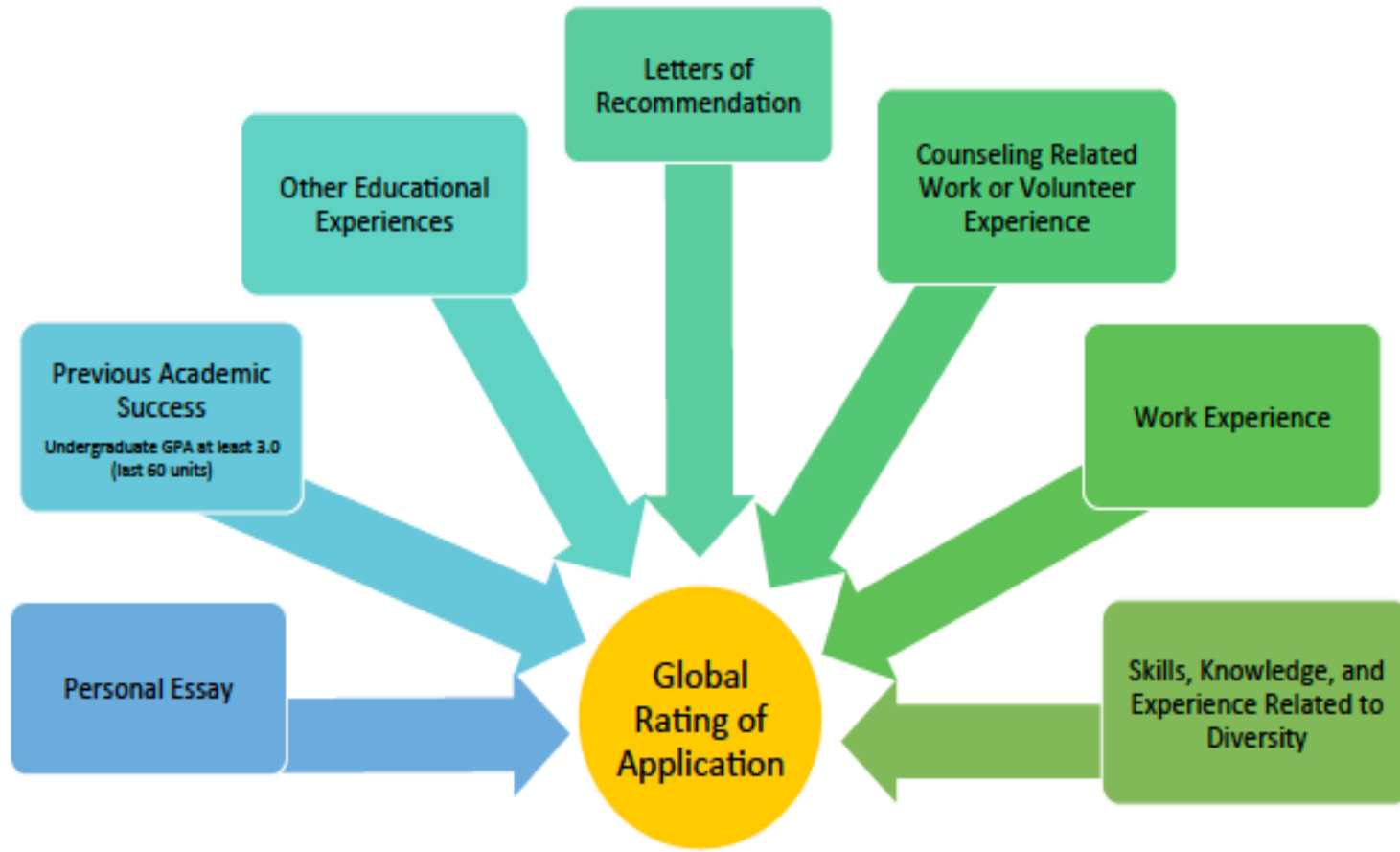
- ANNUAL PROGRAM PERFORMANCE REPORT (demographics, program evaluation, student assessment)
- VITAL STATISTICS REPORT (demographics, time to graduation, employment of graduates, etc.)



**NEXT UP:  
ADMISSIONS**



# Holistic Admission Criteria



Department of Counseling, San Francisco State University



# Recommended (not required) Preparatory Courses

- ▶ COUN 690 – Field of Counseling\*
- ▶ Coun 691 – Multicultural Human Relations\*
- ▶ Theories of personality
- ▶ Lifespan developmental psychology
- ▶ Abnormal psychology
- ▶ Ethnic studies or multicultural relations
  
- ▶ GRE not required

\*offered only at SF State through the Dept of Counseling



# CAL STATE APPLY

## ONLINE APPLICATION

- ▶ Personal Information
- ▶ Academic History
- ▶ Supplementary Program Materials:
  - ▶ Resume
  - ▶ Personal Statement (must be authored by applicant)
  - ▶ Unofficial Transcripts
  - ▶ Experience Summary: 1) Counseling Experience; 2) Other Experience (paid and volunteer)
- ▶ 2 Letters of Recommendation (academic and/or professional sources)

**TONS of detailed information at** <https://counseling.sfsu.edu/admissions>

**Department of Counseling, San Francisco State University**



# Deadline: Jan 15

for the following Fall Admit (no spring admits)

- ▶ Online application becomes available on October 1
- ▶ Letters of recommendation – CalApply emails your recommenders. System notifies you when your recommender submits their letter. Letters **MUST** be submitted through CalApply. Hardcopies of letters will not be accepted.
- ▶ Processing Fee = \$25.00 (in addition to university application fee). Information about submitting the fee online is in the Application Instructions available our website.
- ▶ Some specializations may select applicants for an interview before making final admission decision
- ▶ All applications are reviewed after the deadline

**Department of Counseling, San Francisco State University**



# Pre-Admission Writing Assessment

- ▶ University requires a pre-admission writing assessment
- ▶ GRE **not** required
- ▶ The writing assessment will be based on the personal statement submitted in the application. **You will be required to sign an affidavit that you are the original author of your personal statement.**
- ▶ HSS 700, Graduate Level Writing Course, is required for students who have been accepted into the program and whose writing indicates a need for improvement to meet graduate standards.



# Applications and Acceptance

## FOR FALL 2023 ADMISSIONS:

- Received 581 completed applications
- Specialization Acceptance Rates:
  - Career 25%
  - CMHC 7%
  - College 25%
  - MFCC 6%
  - School 17%
- Applicants being recommended for admissions are typically notified by late March

# Additional Q&A

- ▶ Just a few summer classes are offered depending on needs of students
- ▶ Examples of work vs. volunteer counseling related experience
- ▶ Additional Zoom events during Grad Preview week (see Counseling Admissions website for zoom link):

<b>Tuesday, Oct 24</b>	7-8 p.m.	Becoming a Professional Counselor: Graduate Counseling Student Panel
<b>Wednesday, Oct 25</b>	6:30-7:30 p.m.	Working as a Professional Counselor: Alumni Panel
<b>Thursday, Oct 26</b>	6:30-7:30 p.m.	SFSU Graduate Counseling Program "Village Conversations" for BIPOC prospective graduate students

# NEED MORE INFORMATION ABOUT THE PROGRAM?



- ▶ Our Website
- ▶ <https://counseling.sfsu.edu>
- ▶ Always check instructions on the online application packet for answers.
- ▶ If the answer is not on the website, email questions to [applymsc@sfsu.edu](mailto:applymsc@sfsu.edu)

